



6 Foxgloves Close
Hamworthy, Poole, BH15 4FH



A well presented, modern semi-detached house with 3 bedrooms, 2 bath/shower rooms, parking for 2 cars and a southerly facing garden.

- Semi-detached house
- Sitting/dining room
- Modern kitchen
- Downstairs w/c
- 3 bedrooms
- Principle bedroom with en-suite
- Family bathroom
- Low maintenance garden
- Driveway parking for 2 cars
- Close to Hamworthy Park and Beach
- No onward chain



ASKING PRICE:

£330,000 (freehold)

EPC RATING:

Band - C

Score	Energy rating	Current	Potential
92+	A		
81-91	B		
69-80	C	76 C	90 B
55-68	D		
39-54	E		
21-38	F		
1-20	G		

Situated in a quiet and sought-after position on Foxgloves Close in Hamworthy, this modern semi-detached house is well-presented and is thoughtfully arranged, together with a sunny south-westerly facing rear garden and driveway parking for two cars.

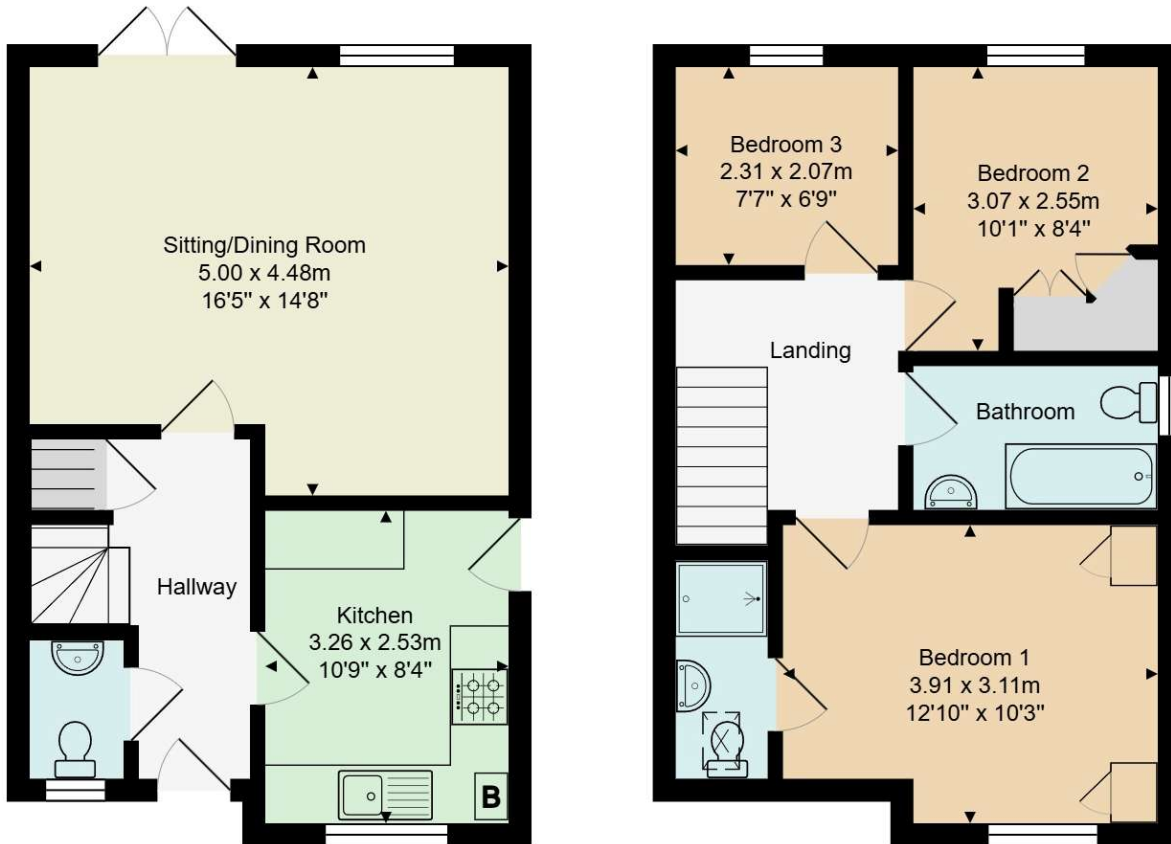
The accommodation begins with an entrance hall, providing access to a ground floor cloakroom fitted with a WC and wash hand basin. The modern kitchen is well appointed with a range of base and eye level units, ample work surfaces, and integrated appliances including a fridge/freezer, oven and gas hob, with additional space for further appliances. A side door and window allow for natural light and provide useful external access.

To the rear of the property, the generous sitting/dining room is a particularly attractive feature, offering excellent space for both relaxing and entertaining. Double doors open directly onto the rear garden, creating a bright and airy feel while seamlessly connecting the indoor and outdoor living space.

Upstairs, there are three well-proportioned bedrooms. The principal bedroom benefits from built-in storage and a stylish ensuite shower room, while bedroom two enjoys fitted wardrobes. The remaining bedroom is ideal as a child's room, nursery or home office. Completing the first floor is a modern family bathroom fitted with a white suite comprising a panelled bath with shower over, WC and wash hand basin.

Externally, the property continues to impress. To the front, there is driveway parking for two vehicles. The enclosed rear garden is a particular highlight, enjoying a desirable south-westerly aspect. Predominantly laid to lawn, the garden also features a patio area adjoining the rear of the house, planted borders, timber panel fencing, and gated side access, creating an attractive and secure outdoor space.

Foxgloves Close is ideally situated within the popular Hamworthy area of Poole, known for its excellent access to local amenities, schools and transport links. Nearby are Hamworthy Park and Beach, offering pleasant coastal walks, open green spaces and waterside recreation. Poole Town Centre and Harbour are within easy reach, while road and rail links provide convenient connections to Bournemouth, Southampton and beyond, making this an ideal location for families, professionals and commuters alike.



Total Area: approx 77.0 m² ... 828 ft²

All measurements are approximate and for display purposes only.



ADDITIONAL INFORMATION

Council tax – D



Hardwick Estate Agents would like to point out that all measurements and indications of plot size set out in these particulars are approximate and are for guidance only. We have not tested any apparatus, equipment, systems or services etc and cannot confirm that they are in working order or fit for purpose. No assumption should be made as to compliance with planning consents or current usage. Nothing in these particulars is intended to indicate that any carpets or curtains, furnishings or fittings, electrical goods (whether wired or not), gas fires or light fittings, or any other fixtures not expressly included form any part of the property being offered for sale. Whilst we endeavour to make our sales particulars accurate and reliable, if there is any point which is of particular importance to you, please contact us and we will be happy to confirm the position to you.

For more information or to arrange a viewing please contact us;

T: 01202 094277 E: info@hardwickea.co.uk

www.hardwickea.co.uk